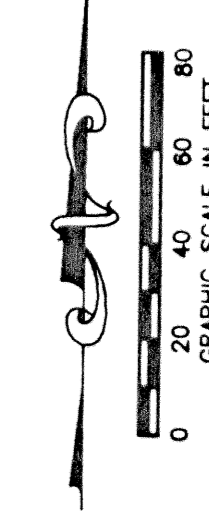
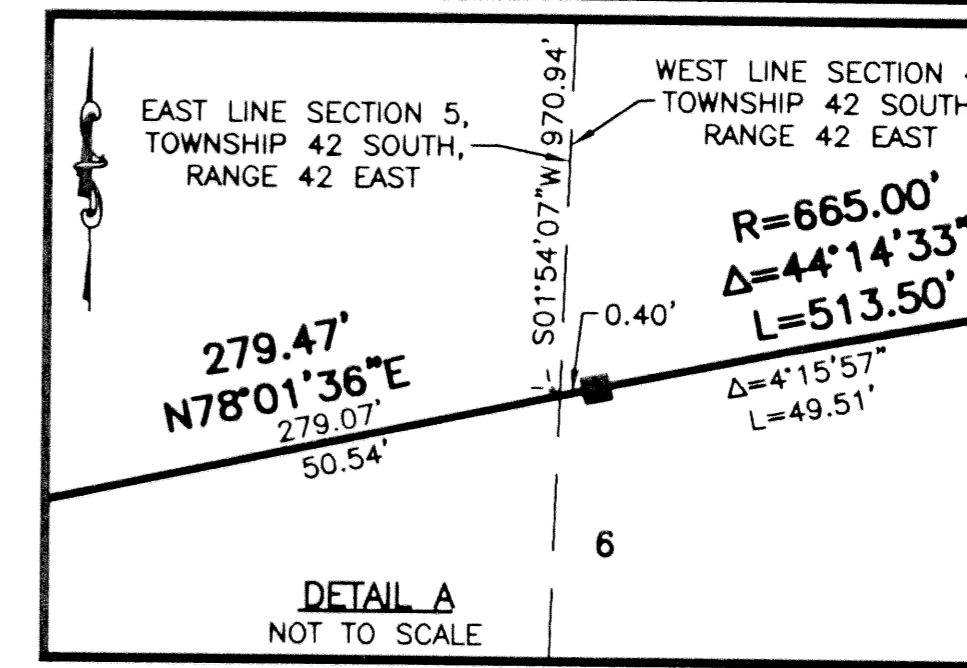


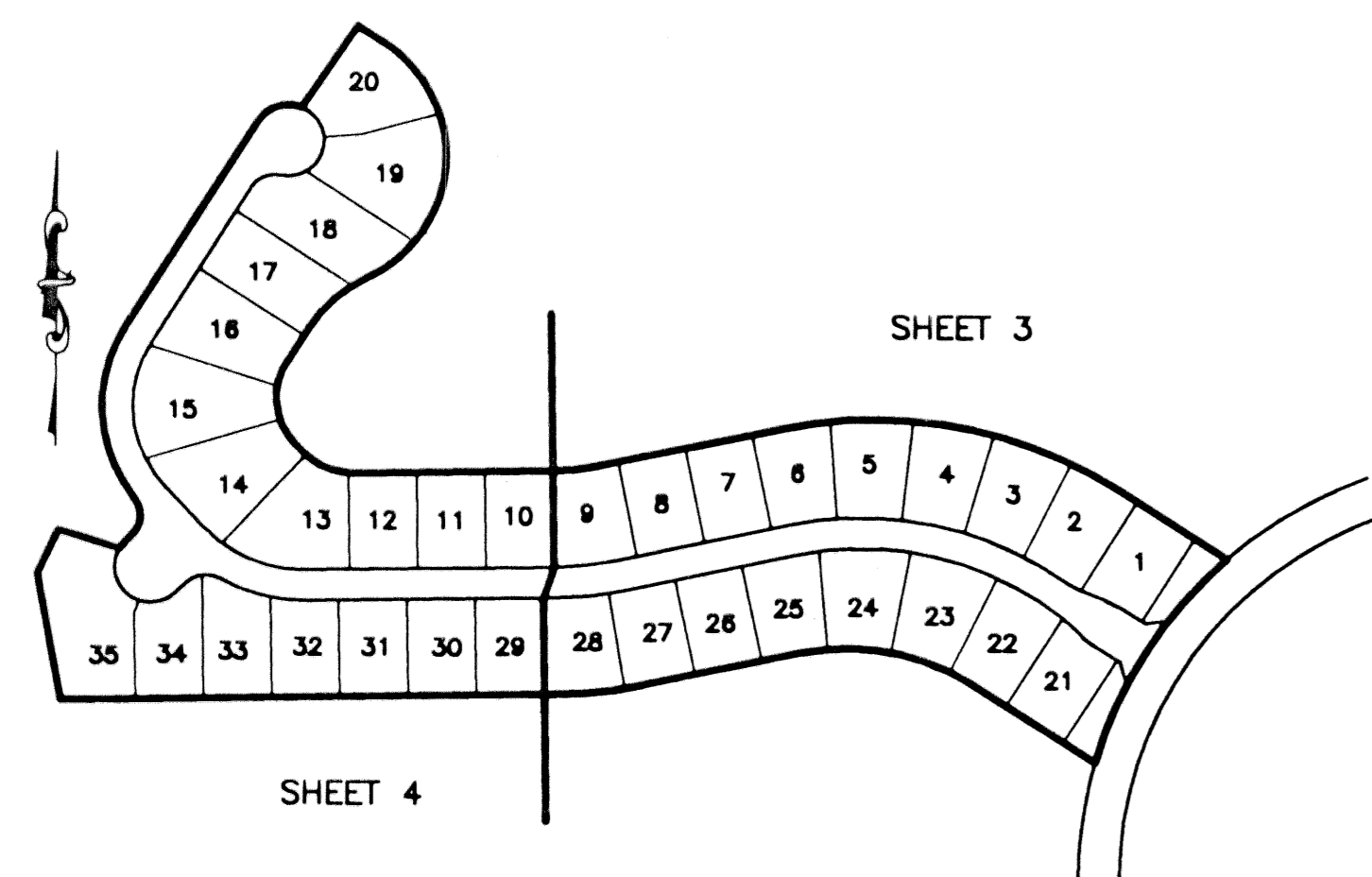
MIRASOL PARCEL EIGHT

PART OF GOLF DIGEST P.C.D.
SECTIONS 4 AND 5, TOWNSHIP 42 SOUTH, RANGE 42 EAST,
CITY OF PALM BEACH GARDENS,
PALM BEACH COUNTY, FLORIDA
SHEET 3 OF 4

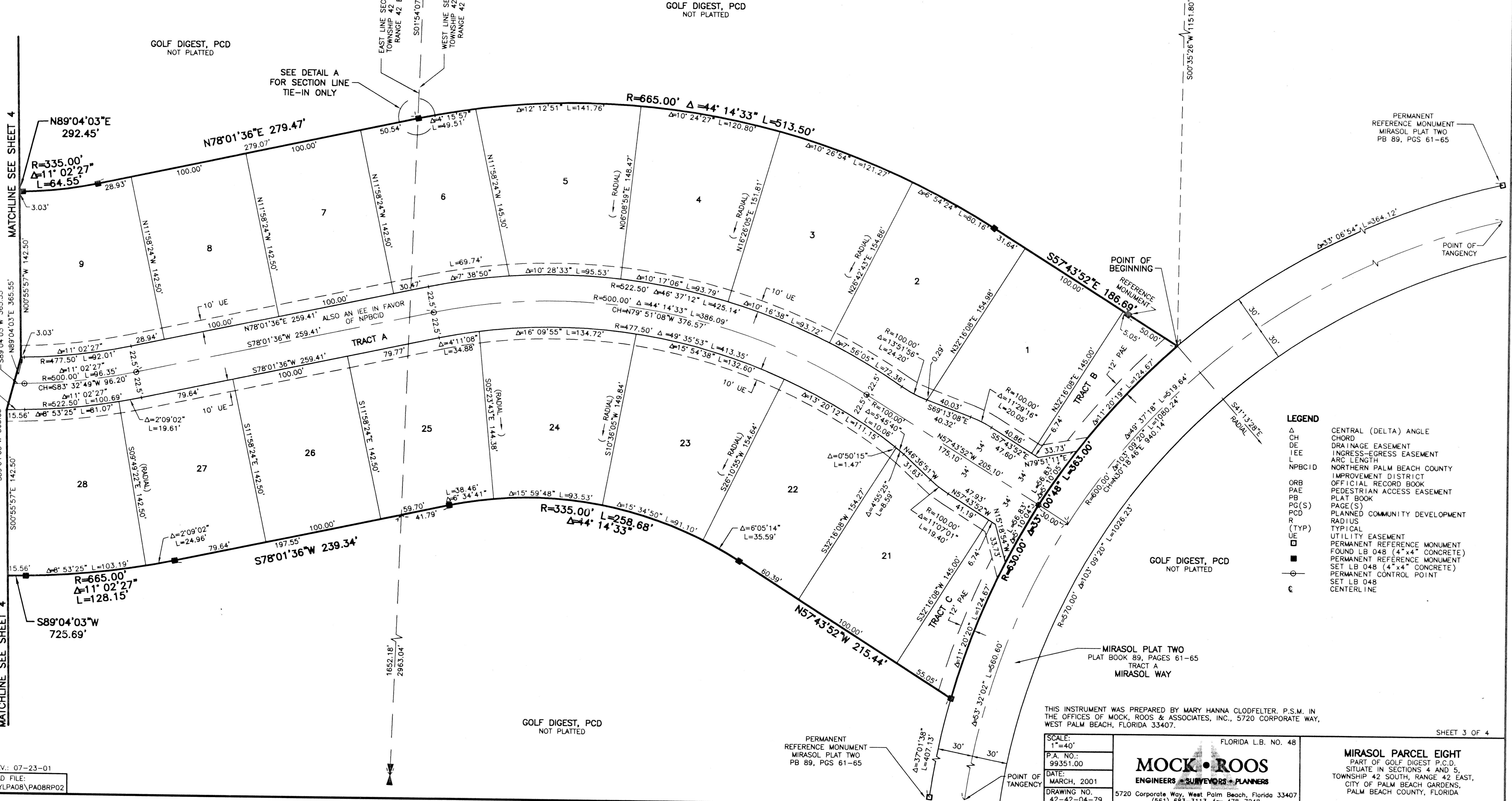


64

STATE OF FLORIDA
COUNTY OF PALM BEACH
THIS PLAT WAS FILED FOR
RECORD _____ DAY OF _____
AD, 2001 AND DULY RECORDED
IN PLAT BOOK _____ ON PAGES
_____ AND _____
DOROTHY H. WILKEN, CLERK
BY: _____, D.C.
CIRCUIT COURT SEAL



SHEET LOCATION MAP
(NOT TO SCALE)



LEGEND

Δ	CENTRAL (DELTA) ANGLE
CH	CHORD
DE	DRAINAGE EASEMENT
IEE	INGRESS-EGRESS EASEMENT
L	ARC LENGTH
NPBCID	NORTHERN PALM BEACH COUNTY IMPROVEMENT DISTRICT
ORB	OFFICIAL RECORD BOOK
PAE	PEDESTRIAN ACCESS EASEMENT
PB	PLAT BOOK
PG(S)	PAGE(S)
PCD	PLANNED COMMUNITY DEVELOPMENT
R	RADIUS
(TYP)	TYPICAL
UE	UTILITY EASEMENT
□	PERMANENT REFERENCE MONUMENT FOUND LB 048 (4"x4" CONCRETE)
■	PERMANENT REFERENCE MONUMENT SET LB 048 (4"x4" CONCRETE)
○	PERMANENT CONTROL POINT
⊙	SET LB 048
C	CENTERLINE

THIS INSTRUMENT WAS PREPARED BY MARY HANNA CLODFELTER, P.S.M. IN THE OFFICES OF MOCK, ROOS & ASSOCIATES, INC., 5720 CORPORATE WAY, WEST PALM BEACH, FLORIDA 33407.

SCALE:	1"=40'
P.A. NO.:	99351.00
DATE:	MARCH, 2001
DRAWING NO.:	42-42-04-79

FLORIDA L.B. NO. 48
MOCK • ROOS
ENGINEERS • SURVEYORS • PLANNERS
5720 Corporate Way, West Palm Beach, Florida 33407
(561) 663-3113, fax 478-7248

MIRASOL PARCEL EIGHT
PART OF GOLF DIGEST P.C.D.,
SITUATE IN SECTIONS 4 AND 5,
TOWNSHIP 42 SOUTH, RANGE 42 EAST,
CITY OF PALM BEACH GARDENS,
PALM BEACH COUNTY, FLORIDA

REV.: 07-23-01
CAD FILE:
TAYLPA08\PA08RPO2